

Supporting a Better Tomorrow...Today

Collaborating With Your Local Community Mental Health Center



Supporting a Better Tomorrow...Today

Why Collaborate?

- o First Responders calls for service involving people with mental illnesses are among the most complex, time-consuming, and potentially dangerous for officers, and often draw intense public scrutiny.
- o The research is **clear**: People with mental illnesses who are referred to behavioral health treatment by first responders experience fewer subsequent contacts with the criminal justice system than those who were not referred to treatment.

Supporting a Better Tomorrow...Today

Benefits of Collaboration

- o Improved Safety
- o Increased Access to Behavioral Healthcare
- o Decreased Repeat Encounters with the Criminal Justice System
- o Reduced Costs
- o Improved Community Relations

Supporting a Better Tomorrow... Today

DMH Crisis Services

Emergency Crisis Response Services

- Mobile Crisis Response Teams (M-CeRT)

Crisis Stabilization Services

- Crisis Stabilization Units (CSU's)


Supporting a Better Tomorrow... Today

Emergency Crisis Response Services

- Goal: Crisis stabilization directed toward preventing hospitalization or arrests
- Available 24 hours a day 7 days a week for adults (SMI), youth (SED), or IDD
- Available in every county in MS
- Individuals are seen by M-CeRT staff within 1 hour (urban) and 2 hours (rural)

Supporting a Better Tomorrow... Today

Community Mental Health/Intellectual Disability Center Service Areas



The map displays the state of Mississippi divided into 13 distinct regions, each color-coded and numbered from 1 to 13. The regions are distributed across the state, with some larger and some smaller, representing the service areas for Community Mental Health/Intellectual Disability Centers.

Supporting a Better Tomorrow... Today

Mobile Crisis Response Teams (M-CeRT)

In FY15

- o Total Contacts: 19,660
- o Face-to-face Contacts: 9,701
- o In Conjunction w/ Law Enforcement: 929

In FY 16

- o Total Contacts: 22,768
- o Face-to-face Contacts: 15,422
- o In Conjunction w/ Law Enforcement: 939

Supporting a Better Tomorrow... Today

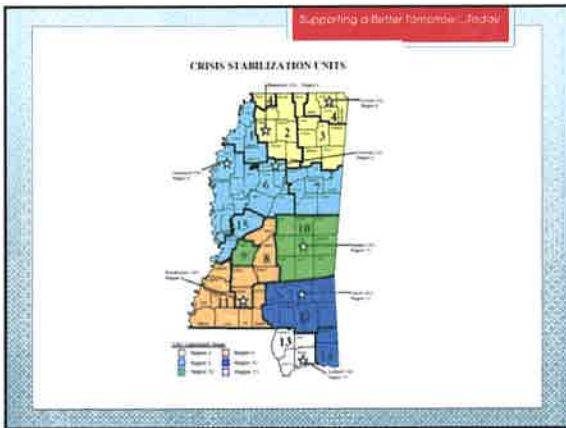
Mobile Crisis Response Teams for the Community Mental Health Centers

Center	Location	Phone	Fax
Alameda	Alameda Community Center	415.763.5200	415.763.5200
Alameda	Alameda Community Center - 2nd Floor	415.763.5200	415.763.5200
Alameda	Alameda Community Center - 3rd Floor	415.763.5200	415.763.5200
Alameda	Alameda Community Center - 4th Floor	415.763.5200	415.763.5200
Alameda	Alameda Community Center - 5th Floor	415.763.5200	415.763.5200
Alameda	Alameda Community Center - 6th Floor	415.763.5200	415.763.5200
Alameda	Alameda Community Center - 7th Floor	415.763.5200	415.763.5200
Alameda	Alameda Community Center - 8th Floor	415.763.5200	415.763.5200
Alameda	Alameda Community Center - 9th Floor	415.763.5200	415.763.5200
Alameda	Alameda Community Center - 10th Floor	415.763.5200	415.763.5200
Alameda	Alameda Community Center - 11th Floor	415.763.5200	415.763.5200
Alameda	Alameda Community Center - 12th Floor	415.763.5200	415.763.5200
Alameda	Alameda Community Center - 13th Floor	415.763.5200	415.763.5200
Alameda	Alameda Community Center - 14th Floor	415.763.5200	415.763.5200
Alameda	Alameda Community Center - 15th Floor	415.763.5200	415.763.5200
Alameda	Alameda Community Center - 16th Floor	415.763.5200	415.763.5200
Alameda	Alameda Community Center - 17th Floor	415.763.5200	415.763.5200
Alameda	Alameda Community Center - 18th Floor	415.763.5200	415.763.5200
Alameda	Alameda Community Center - 19th Floor	415.763.5200	415.763.5200
Alameda	Alameda Community Center - 20th Floor	415.763.5200	415.763.5200

Supporting a Better Tomorrow... Today

Crisis Stabilization Units

- o For individuals experiencing acute psychiatric distress (voluntary/involuntary)
- o Short-term residential treatment
- o Provides: psychiatric supervision, nursing services, structured therapeutic activities, & intensive psychotherapy (I, F, & G)
- o Goal: prevent civil commitment and long-term residential treatment



Supporting a Better Tomorrow... Today

Crisis Stabilization Units

- o All eight are operated by CMHC's
- o Seven can accept clients from anywhere
- o Gulfport CSU can only accept clients from their four county catchment
- o Catholic Charities operates Hope Haven – serves youth 12 – 18

Supporting a Better Tomorrow... Today

CSU FY2015 Stats

CSUs	Individuals Served
Batesville CSU	369
Brookhaven CSU	383
Cleveland CSU	385
Corinth CSU	574
Grenada CSU	386
Gulfport CSU	503
Laurel CSU	444
Newton CSU	565
Total	3,609

Supporting a Better Tomorrow - Today

CSU FY2016 Stats

CSUs	Individuals Served
Balesville CSU	307
Brookhaven CSU	393
Cleveland CSU	325
Corinth CSU	584
Grenada CSU	346
Gulfport CSU	500
Laurel CSU	396
Newton CSU	419
Total	3,270

Supporting a Better Tomorrow - Today

CSU Stats

FY2015
Admissions (statewide)
o Voluntary - 1,988
o Involuntary - 1,621
Diversion Rate - 89.27%

FY2016
Admissions (statewide)
o Voluntary - 1,732
o Involuntary - 1,538
Diversion Rate - 89.2%

- Supporting a Better Tomorrow - Today
- ### More programs to assist individuals in the community
- o Programs of Assertive Community Treatment (PACT Teams)
 - o Adult Make A Plan (AMAP Teams)
 - o Specialized Planning and Options To Treatment (SPOTT Team)
 - o Crisis Intervention Teams (CIT)

Supporting a Better Tomorrow - Today

Programs of Assertive Community Treatment Teams

- o PACT is a mental health service delivery model for facilitating community living, psychological rehabilitation and recovery for persons who have the most severe and persistent mental illnesses and have not benefited from traditional outpatient services.
- o i.e. it's a mobile mental health center

Supporting a Better Tomorrow - Today

PACT Teams

- o Available to clients 24/7
- o Staffed at 10:1- FT staff:client
 - o Master's level clinician – team leader
 - o Psych/Psych NP - 16 hours/wk:50 clients
 - o 2 RN's (full-time)
 - o Another master's level clinician
 - o 1 substance abuse specialist
 - o 1 employment specialist
 - o 1 certified peer support specialist

Supporting a Better Tomorrow - Today

PACT Teams

Tishomingo County Timber Hills CMHC (Region 4) 7568 Highway 178 Olive Branch, MS 38854 Contact: Samantha Mays 662-426-7292	Forrest/Lamar Counties Pine Bluff MHR (Region 12) 103 South 10th Street Hattiesburg, MS 39401 Contact: Al Conteras 601-544-6641 ext. 147	Leflore/Chickasaw/Noxubee Counties Lila Hale (Region 6) 2504 Browning Road Greenwood, MS 38935 Contact: Jodie Mitchell 662-453-6211
Hammond/Jackson/Jackson Counties Pine Bluff MHR (Region 12) 3413 Washington Avenue, Suite A Outborn, MS 39501 Contact: Nathan Powell 778-206-7790	Jackson/Mingo Hinds MHR (Region 9) 6508 Dogwoodview Parkway, Suite D Jackson, MS 39213 Contact: Elizabeth McPherson 601-362-2266	Western Union Counties Warren/Walton CMHC (Region 15) 3446 Wisconsin Avenue Vicksburg, MS 39180 Contact: Charles Stimpney 601-638-0024
Washington County Weems CMHC (Region 10) 1412 14th Street Meridian, MS 39301 Contact: Kristina Wilson 661-484-5779	Lee County U.S. Core (Region 3) 1927A Barksdale Rd Tupelo, MS 38801 Contact: Victoria Boelmen 662-594-2023	

Supporting a Better Tomorrow - Today

Adult Make A Plan Teams

- o AMAP Teams address the needs of adults, 21 years and above, with serious mental illness or dually diagnosed (SMI/DD or SMI/A&D) who have **frequent/multiple** placements in inpatient psychiatric services which could possibly be prevented with the coordinated efforts of multiple agencies and services.

Supporting a Better Tomorrow - Today

AMAP Teams

- o The overall goal of the AMAP Team is to develop a new and different intervention for the individual in order for them to have a greater success of being maintained in a community setting.
- o The AMAP Team Coordinator must provide information about the AMAP Team to all Chancery Clerks and Sheriff's Departments of every county in the CMHC catchment area.
- o Law enforcement can make referrals to AMAP, and is encouraged to attend monthly meetings.

Supporting a Better Tomorrow - Today

Specialized Planning & Options to Treatment (SPOTT)

- o SPOTT's goal is to provide the people served through the public mental health system with access to appropriate, peer supported, community based choice for care.
- o SPOTT uses a person-centered process to support people where that are.
- o A SPOTT team member conducts face-to-face discovery with every referral.

Supporting a Better Tomorrow... Today

Specialized Planning & Options To Treatment (SPOTT)

- To make a referral to the SPOTT Team contact:

Beverly Magee at DMH
601-359-6287
beverly.magee@dmh.ms.gov

Supporting a Better Tomorrow... Today

Mental Health First Aid

- The Mental Health First Aid course is appropriate for anyone 18 years and older who wants to learn how to help a person who may be experiencing a mental health related crisis or problem. Topics covered include anxiety, depression, psychosis, and addictions.
- The Mental Health First Aid for Law Enforcement, Corrections, and Public Safety module builds upon the effectiveness of the standard Mental Health First Aid curriculum by focusing on the unique experiences and needs of law enforcement, corrections and public safety audiences.

Supporting a Better Tomorrow... Today

Mental Health First Aid

- MHFA can be offered to MS law enforcement agencies at very low to no cost to the agency.
- It is an 8 hour course and has been approved for CE's by Dept. of Public Safety
- To schedule a MHFA training contact Brent Hurley at DMH or your local M-CeRT Coordinator

Supporting a Better Tomorrow... Today

Crisis Intervention Teams (CIT)

CIT is an innovative police-based first responder program that has become nationally known as a best-practice of pre-arrest jail diversion for those in a mental illness crisis.

It provides law enforcement based crisis intervention training for helping individuals with mental illness.

Supporting a Better Tomorrow... Today

CIT

Crisis Intervention Teams are the product of partnership's between:

- o law enforcement officers/agencies
- o Community Mental Health Centers
 - o CSU's
- o primary health providers
- o behavioral health professionals
- o Advocate groups (NAMI)
- o Courts and justice system

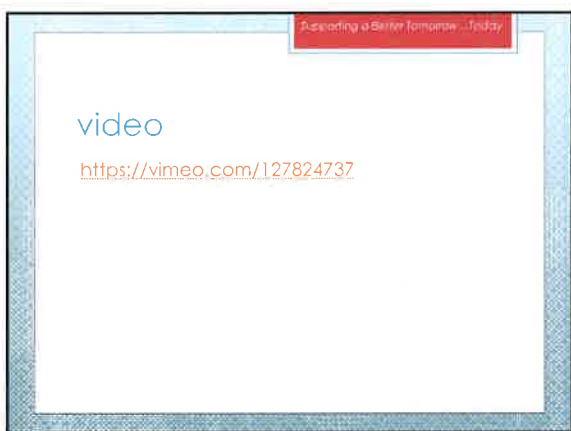
Supporting a Better Tomorrow... Today

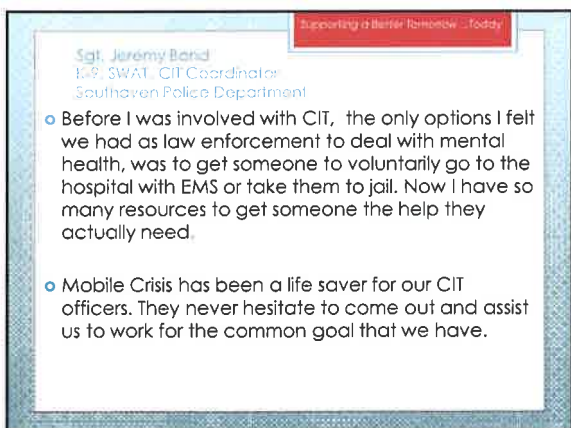
CIT

- o Improves outcomes officer involved crisis incidents
- o Improves officer safety
- o Costs law enforcement/justice system less \$
- o Get's more SMI individuals into MH services rather than corrections

o Recognized certification by MS Dept. of Mental health & Dept. of Public Safety







Supporting a Better Tomorrow... Today

Sgt. Jeremy Bond
 IC9, SWAT, CIT Coordinator
 Southaven Police Department

- o Region IV has been paramount in making our program work as smoothly as it does. Catherine Davis, the Crisis Coordinator for Region IV, follows up on every CIT call that we have. As the CIT Coordinator for the Southaven Police Department I speak to her almost daily about the consumers in our community.
- o Through establishing CIT, we have established and incredibly strong relationship with the mental health providers in our community. Although our program is extremely new, we have seen the positive impact it is having. It is truly a partnership between law enforcement and our mental health providers that is invaluable.

Supporting a Better Tomorrow... Today

Ward Calhoun
 Chief Deputy
 Lauderdale County Sheriff's Dept.

While we had a working relationship with Weems prior to our CIT program, it was limited. We certainly didn't have a relationship where officers were able to interact with them quickly or with a real understanding of the types of services they were able to provide. Prior to CIT it felt as if the mind set was that people in need, had to go to Weems. By working together, Weems has been able to use law enforcement to help them provide better services to the community.

Mobile Crisis was added at Weems after CIT had been established. I considered it "the cherry on top of the sundae" it provided the link that was needed between what a CIT trained officer could do in the field and having to take an individual to the CSU. Many times if an officer was unsure or if a CIT officer wasn't available then having mobile crisis to respond provided a much needed resource.

Supporting a Better Tomorrow... Today

Ward Calhoun
 Chief Deputy
 Lauderdale County Sheriff's Dept.

Weems follows-up with consumers our officers intervene with on CIT calls. This is one area that all of us recognize is important in order to help consumers. With the resources that are legal and available, they attempt to follow up. Having the PACT to refer consumers who are in the most need helps. In Mississippi we need to look toward how we can better serve those who find themselves at the "revolving doors" of the various mental health services in our communities.

Preparing a Better Tomorrow - Today

Ward Calhoun
Chief Deputy
Lauderdale County Sheriff's Dept.

While each of us has our own "mission" in the community, we better serve our community when we work in concert with each other. The tax payers deserve the best effort that we can give them. Working together, pulling the same direction will allow each agency to better serve the community.

Preparing a Better Tomorrow - Today

For more info or assistance:

Brent Hurley
601-359-6203
brent.hurley@dmh.ms.gov
